

MCLEOD SCHOOL OF MOTORING

MIRRORS
SIGNAL
MANOUVRE

MIRRORS

The Highway Code tells you the three main times to check your mirrors;

— 01 —

Check mirrors before you signal

— 02 —

Check mirrors before a change of direction

— 03 —

Check mirrors before a change of speed

The main mirror is the interior mirror. If you are moving from a left position to a right position consider the right exterior mirror.

If you are moving from a right position to a left position consider the left exterior mirror. A lifesaver is a mirror check just before a left or right turn.

SIGNAL

Signals are normally indicators and they are used to benefit other road users.

Signals are used for a change of direction and for road junctions.

A change of direction could be moving out from the side of the road, moving out to pass obstructions or turning at road junctions.

Signals for slowing down are primarily brake lights.

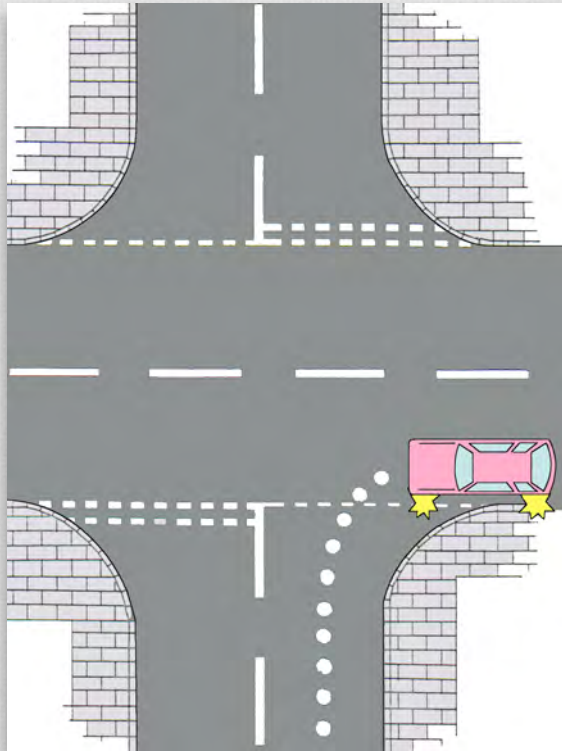
MANOUVRE

A manoeuvre is a change of direction and or speed.

- 01 Turning left off a major road
- 02 Turning left off a major road taking a second opening
- 03 Turning right off a major road
- 04 Turning right off a major road taking a second opening
- 05 Turning right off a major road taking a second opening with closely following vehicles
- 06 Turning right off a major road at a bend
- 07 Turning right at a staggered junction
- 08 Turning right at a staggered junction
- 09 Turning left onto a major road
- 10 Turning right onto a major road
- 11 Turning right onto a major road with oncoming vehicles turning left
- 12 Turning right onto a major road with oncoming traffic going ahead
- 13 Turning right onto a major road with oncoming vehicles turning right
- 14 Turning left at a roundabout
- 15 Going ahead at a roundabout
- 16 Going ahead with dedicated left turn
- 17 Going ahead at a three lane roundabout
- 18 Turning right at a roundabout

01 TURNING LEFT OFF A MAJOR ROAD

MANOUVRE



ROAD LAYOUT



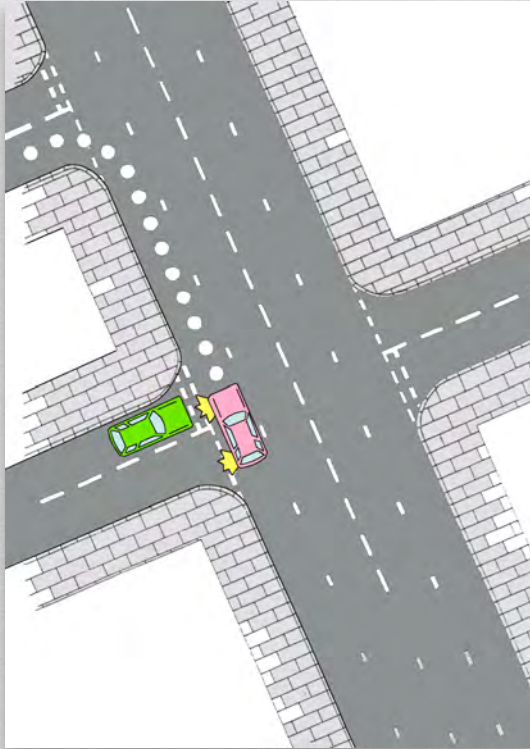
MIRRORS Check interior mirror then left mirror.

SIGNAL Signal to turn left.

MANOUVRE Position 1 metre from the kerb or any obstruction and slow down.
Look into the opening for obstructions or pedestrians.

02 TURNING LEFT OFF A MAJOR ROAD TAKING THE SECOND OPENING

MANOUVRE



ROAD LAYOUT



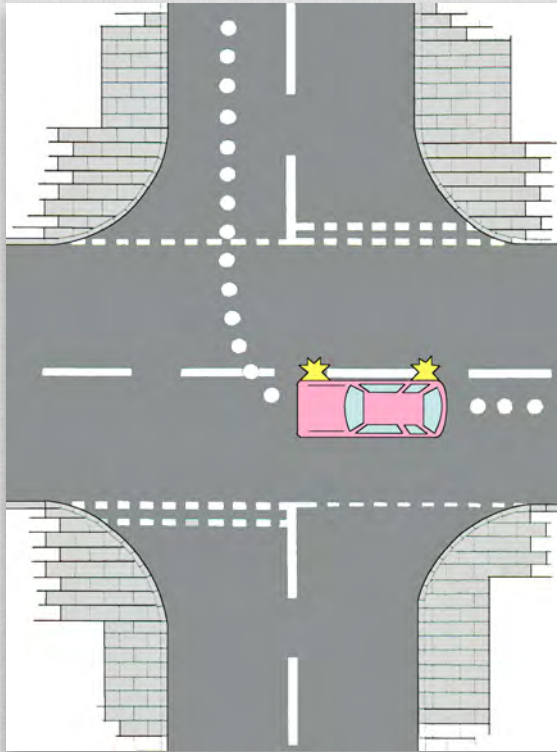
MIRRORS Check interior mirror then left mirror.

SIGNAL Signal to turn left half way past the first opening.

MANOUVRE Position 1 metre from the kerb and slow down.
Look into the opening for obstructions or pedestrians.

03 TURNING RIGHT OFF A MAJOR ROAD

MANOUVRE



ROAD LAYOUT



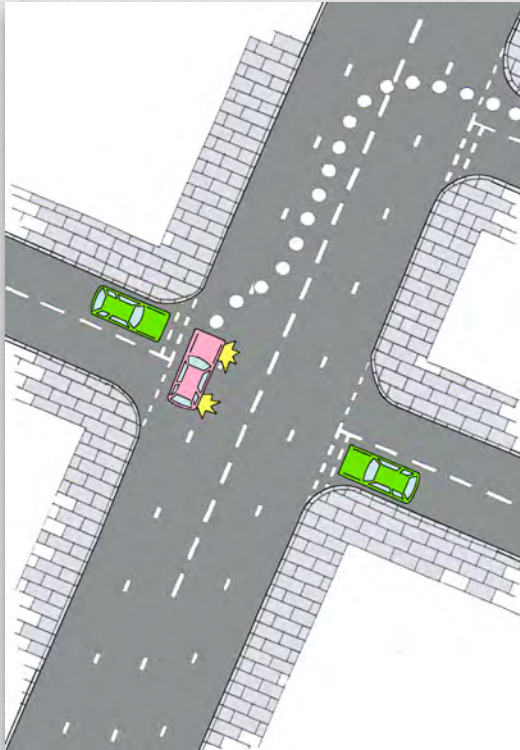
MIRRORS Check interior mirror then right mirror.

SIGNAL Signal to turn right.

MANOUVRE Position close to the centre line. Slow down and be prepared to give way to oncoming traffic.

04 TURNING RIGHT OFF A MAJOR ROAD TAKING THE SECOND OPENING

MANOUVRE



ROAD LAYOUT



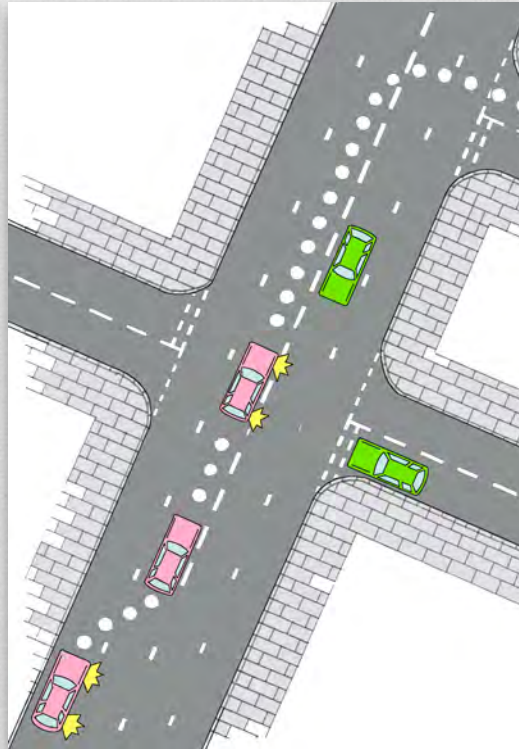
MIRRORS Check interior mirror then right mirror.

SIGNAL Signal to turn right half way past the first opening.

MANOUVRE Position close to the centre line. Slow down and be prepared to give way to oncoming traffic.

05 TURNING RIGHT OFF A MAJOR ROAD TAKING THE SECOND OPENING WITH CLOSELY FOLLOWING VEHICLES

MANOUVRE



ROAD LAYOUT



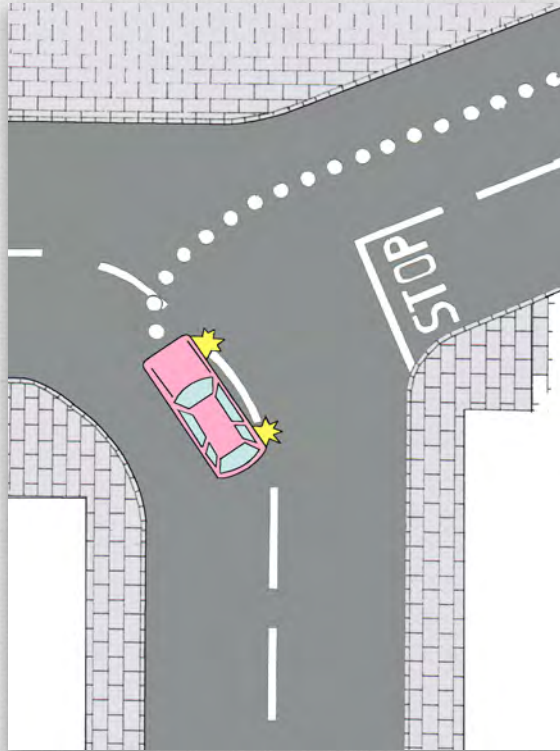
MIRRORS Check interior mirror then right mirror.

SIGNAL Signal to move to the right lane and then cancel the signal.
Signal to turn right half way past the first opening.

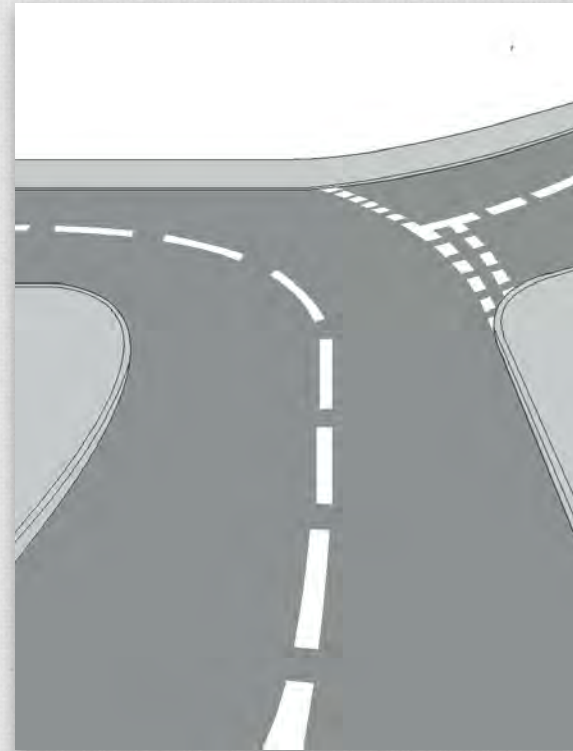
MANOUVRE Position in the right lane early because of the closely following vehicles. Half way past the first opening position close to the centre line. Slow down and be prepared to give way to oncoming traffic.

06 TURNING RIGHT OFF A MAJOR ROAD AT A BEND

MANOUVRE



ROAD LAYOUT



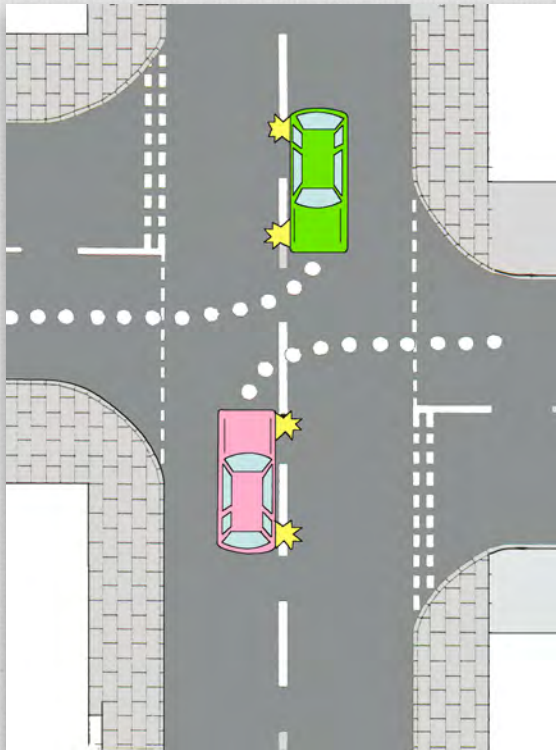
MIRRORS Check interior mirror then right mirror.

SIGNAL Signal to turn right.

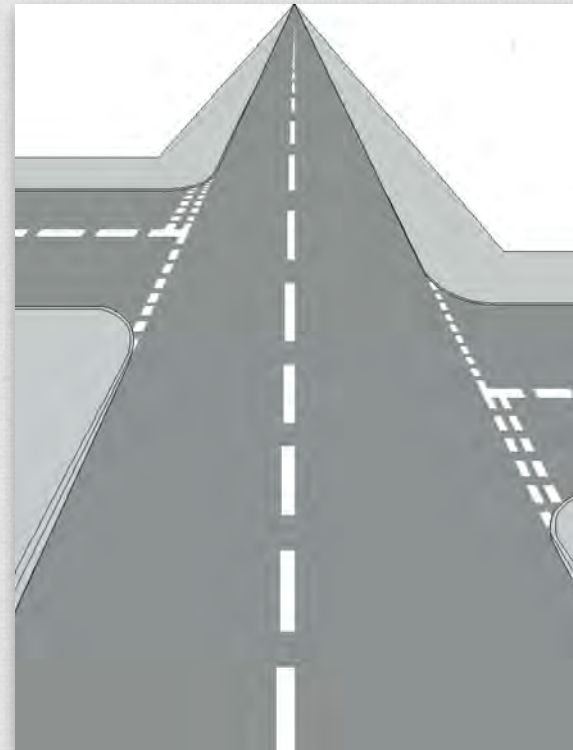
MANOUVRE Position close to the centre line and follow the shape of the bend. Slow down and be prepared to stop and give way to oncoming traffic.

07 TURNING RIGHT OFF A MAJOR ROAD AT A STAGGERED JUNCTION

MANOUVRE



ROAD LAYOUT



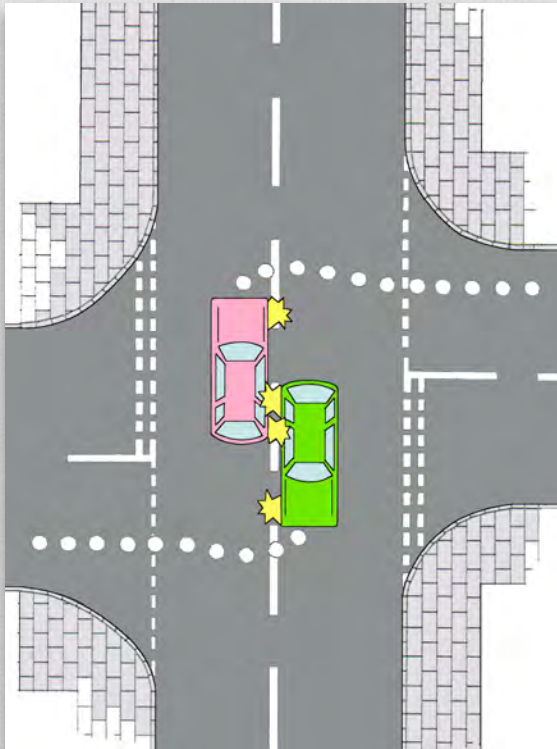
MIRRORS Check interior mirror then right mirror.

SIGNAL Signal to turn right.

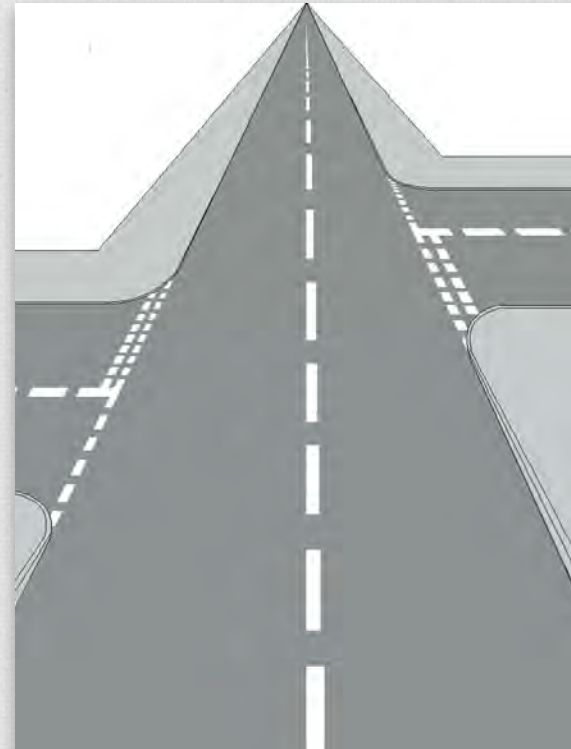
MANOUVRE Position close to the centre line. Slow down and be prepared to give way to oncoming traffic.
Turn left side to left side.

08 TURNING RIGHT OFF A MAJOR ROAD AT A STAGGERED JUNCTION

MANOUVRE



ROAD LAYOUT



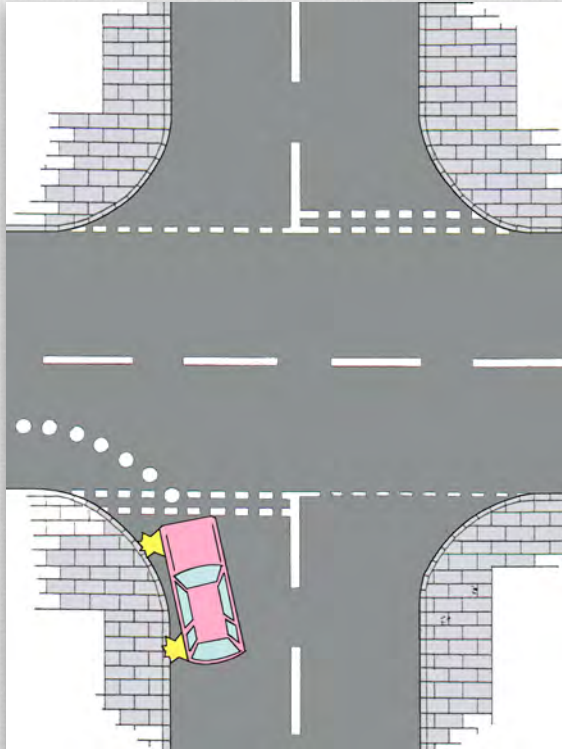
MIRRORS Check interior mirror then right mirror.

SIGNAL Signal to turn right.

MANOUVRE Position close to the centre line. Slow down and be prepared to give way to oncoming traffic.
Turn right side to right side.

09 TURNING LEFT ONTO A MAJOR ROAD

MANOUVRE



ROAD LAYOUT



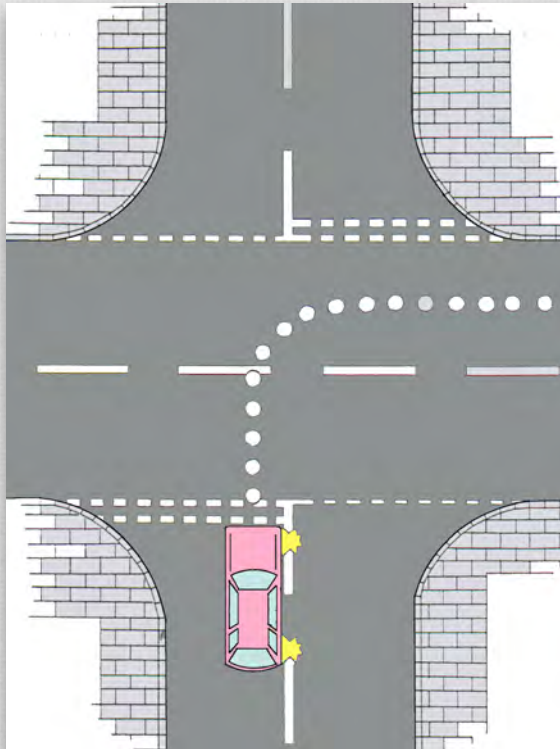
MIRRORS Check interior mirror then left mirror.

SIGNAL Signal to turn left.

MANOUVRE Position 1 metre from the kerb and slow down. Follow the shape of the kerb and be prepared to stop at the give way lines. Give way to traffic on the major road.

10 TURNING RIGHT ONTO A MAJOR ROAD

MANOUVRE



ROAD LAYOUT



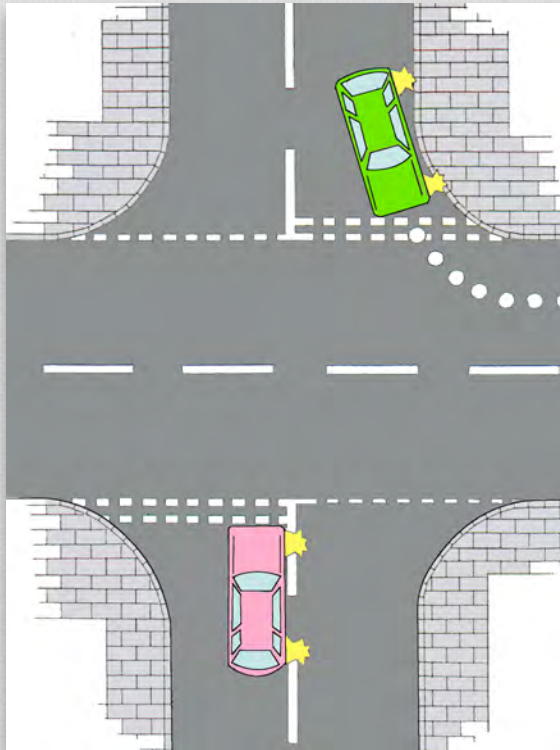
MIRRORS Check interior mirror then right mirror.

SIGNAL Signal to turn right.

MANOUVRE Position close to the centre line and slow down.
Be prepared to stop at the give way lines. Give way to traffic on the major road.

11 TURNING RIGHT ONTO A MAJOR ROAD WITH ONCOMING VEHICLES TURNING LEFT

MANOUVRE



ROAD LAYOUT



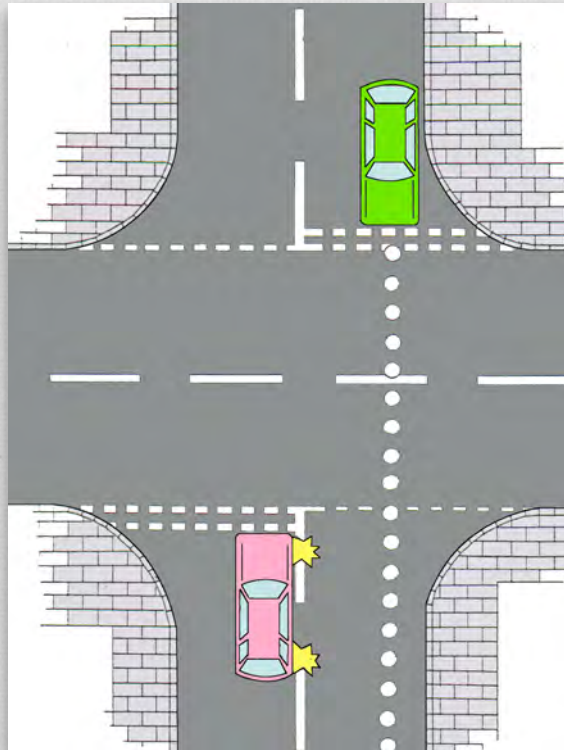
MIRRORS Check interior mirror then right mirror.

SIGNAL Signal to turn right.

MANOUVRE Position close to the centre line and slow down. Be prepared to stop and give way to traffic on the major road. Oncoming vehicles turning left have priority.

12 TURNING RIGHT ONTO A MAJOR ROAD WITH ONCOMING VEHICLES GOING AHEAD

MANOUVRE



ROAD LAYOUT



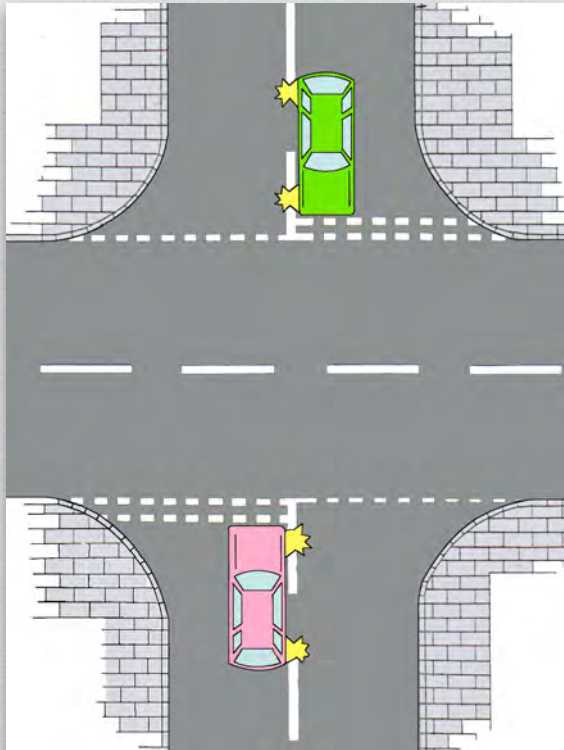
MIRRORS Check interior mirror then right mirror.

SIGNAL Signal to turn right.

MANOUVRE Position close to the centre line and slow down. Be prepared to stop and give way to traffic on the major road. Oncoming vehicles going ahead have priority.

13 TURNING RIGHT OFF A MAJOR ROAD WITH ONCOMING VEHICLES TURNING RIGHT

MANOUVRE



ROAD LAYOUT



MIRRORS Check interior mirror then right mirror.

SIGNAL Signal to turn right.

MANOUVRE Position close to the centre line and slow down. Be prepared to stop and give way to traffic on the major road. As both vehicles are turning right there is equal priority.

14 TURNING LEFT AT A ROUNDABOUT

MANOUVRE



ROAD LAYOUT



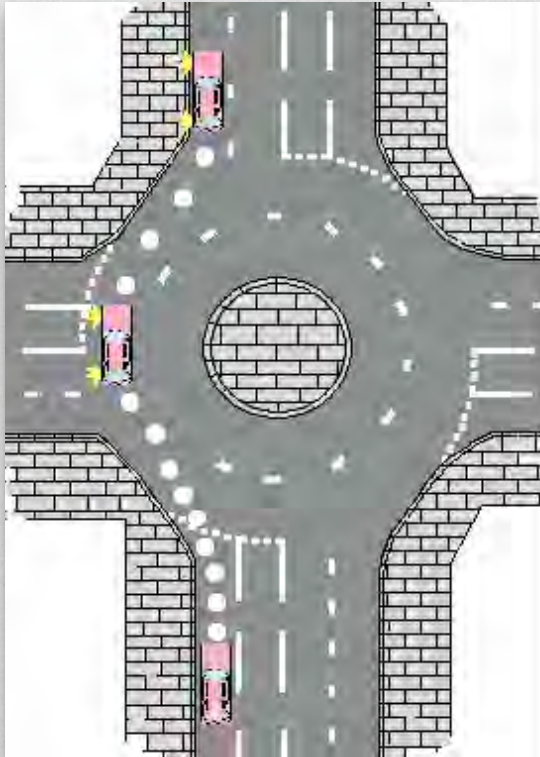
MIRRORS Check interior mirror then left mirror on approach. Check interior mirror then left mirror on exit.

SIGNAL Signal to turn left.

MANOUVRE Position in the left lane 1 metre from the kerb. Slow down and be prepared to give way to traffic from the right.

15 GOING AHEAD AT A ROUNDABOUT

MANOUVRE



ROAD LAYOUT



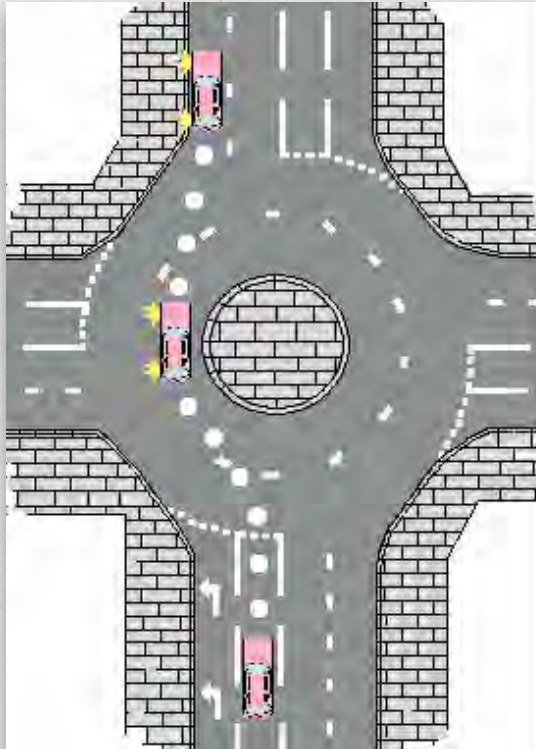
MIRRORS Check interior mirror then left mirror on approach. Check interior mirror then left mirror on exit.

SIGNAL No signal on approach. Signal left to exit the roundabout.

MANOUVRE Position in the left lane 1 metre from the kerb. Slow down and be prepared to give way to traffic from the right.

16 GOING AHEAD AT A ROUNDABOUT WITH A DEDICATED LEFT TURN

MANOUVRE



ROAD LAYOUT



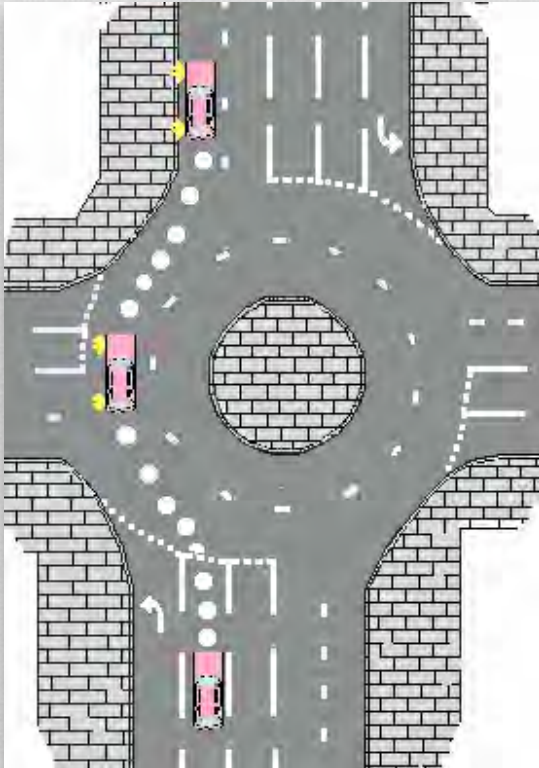
MIRRORS Check interior mirror then right mirror on approach. Check interior mirror then left mirror on exit.

SIGNAL No signal on approach. Signal left to exit the roundabout.

MANOUVRE Position in the right lane close to the centre line. Slow down and be prepared to give way to traffic from the right.

17 GOING AHEAD AT A THREE LANE ROUNDABOUT

MANOUVRE



ROAD LAYOUT



MIRRORS Check interior mirror then right mirror on approach. Check interior mirror then left mirror on exit.

SIGNAL No signal on approach. Signal left to exit the roundabout.

MANOUVRE Position in the middle of the three lanes. Slow down and be prepared to give way to traffic from the right.

18 TURNING RIGHT AT A ROUNDABOUT

MANOUVRE



ROAD LAYOUT



MIRRORS Check interior mirror then right mirror on approach. Check interior mirror and left mirror on exit.

SIGNAL Signal to turn right. Signal left to exit the roundabout.

MANOUVRE Position in the right lane close to the centre line. Slow down and be prepared to give way to traffic from the right.

MCLEOD SCHOOL OF MOTORING

MIRRORS
SIGNAL
MANOUVRE
